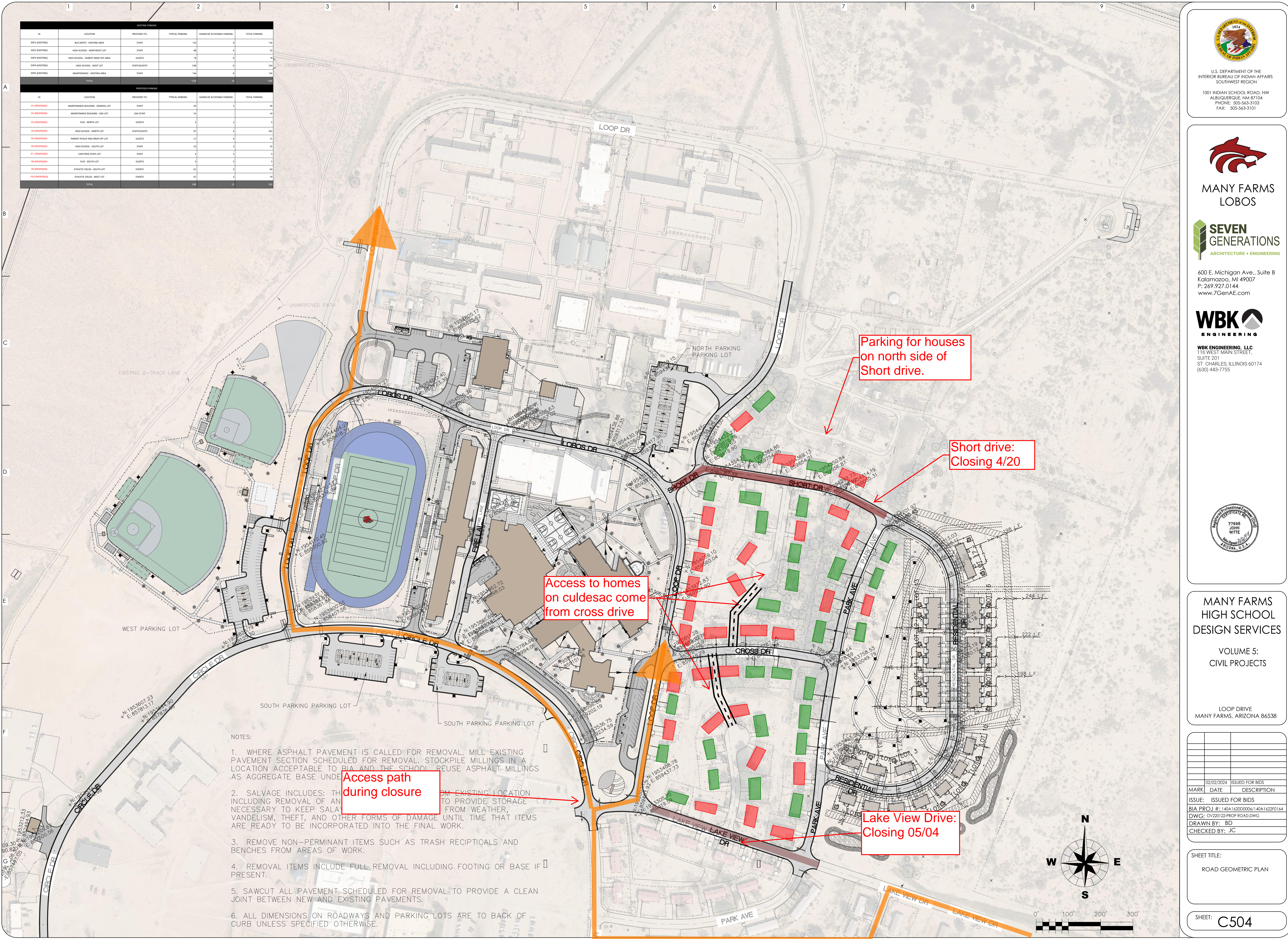


EXISTING PARKING					
ID	LOCATION	PROVIDED TO:	TYPICAL PARKING	HANDICAP ACCESSIBLE PARKING	TOTAL PARKING
EP1 (EXISTING)	BUS DEPOT - EASTING AREA	STAFF	10	0	10
EP2 (EXISTING)	HIGH SCHOOL - NORTH/EAST LOT	STAFF	40	4	44
EP3 (EXISTING)	HIGH SCHOOL - PARENT DROP OFF AREA	GUESTS	18	0	18
EP4 (EXISTING)	HIGH SCHOOL - WEST LOT	STAFF/GUESTS	140	0	140
EP5 (EXISTING)	MAINTENANCE - EASTING AREA	STAFF	14	0	14
TOTAL					
226					
PROPOSED PARKING					
ID	LOCATION	PROVIDED TO:	TYPICAL PARKING	HANDICAP ACCESSIBLE PARKING	TOTAL PARKING
P1 (PROPOSED)	MAINTENANCE BUILDING - GENERAL LOT	STAFF	20	3	23
P2 (PROPOSED)	MAINTENANCE BUILDING - GSA LOT	GSA STAFF	14	0	14
P3 (PROPOSED)	FIELD - NORTH LOT	GUESTS	3	0	3
P4 (PROPOSED)	HIGH SCHOOL - NORTH LOT	STAFF/GUESTS	17	4	21
P5 (PROPOSED)	PARENT DROP OFF AND DEEP OFF LOT	GUESTS	17	4	21
P6 (PROPOSED)	HIGH SCHOOL - SOUTH LOT	STAFF	23	2	25
P7 (PROPOSED)	CATERINA STAFF LOT	STAFF	3	0	3
P8 (PROPOSED)	FIELD - SOUTH LOT	GUESTS	3	0	3
P9 (PROPOSED)	ATHLETIC FIELD - SOUTH LOT	EVENTS	63	0	63
P10 (PROPOSED)	ATHLETIC FIELD - WEST LOT	EVENTS	17	0	17
TOTAL					
230					



- NOTES:
- WHERE ASPHALT PAVEMENT IS CALLED FOR REMOVAL, MILL EXISTING PAVEMENT SECTION SCHEDULED FOR REMOVAL. STOCKPILE MILLINGS IN A LOCATION ACCEPTABLE TO BIA AND THE SCHOOL. REUSE ASPHALT MILLINGS AS AGGREGATE BASE UNDER NEW PAVEMENT.
  - SALVAGE INCLUDES: THE REMOVAL OF ALL ITEMS FROM EXISTING LOCATION TO PROVIDE STORAGE TO KEEP SALVAGE FROM WEATHER, VANDALISM, THEFT, AND OTHER FORMS OF DAMAGE UNTIL TIME THAT ITEMS ARE READY TO BE INCORPORATED INTO THE FINAL WORK.
  - REMOVE NON-PERMANENT ITEMS SUCH AS TRASH RECIPTICALS AND BENCHES FROM AREAS OF WORK.
  - REMOVAL ITEMS INCLUDE FULL REMOVAL INCLUDING FOOTING OR BASE IF PRESENT.
  - SAWCUT ALL PAVEMENT SCHEDULED FOR REMOVAL TO PROVIDE A CLEAN JOINT BETWEEN NEW AND EXISTING PAVEMENTS.
  - ALL DIMENSIONS ON ROADWAYS AND PARKING LOTS ARE TO BACK OF CURB UNLESS SPECIFIED OTHERWISE.

U.S. DEPARTMENT OF THE INTERIOR  
BUREAU OF INDIAN AFFAIRS  
SOUTHWEST REGION  
1001 INDIAN SCHOOL ROAD, NW  
ALBUQUERQUE, NM 87104  
PHONE: 505-545-3103  
FAX: 505-543-3101

MANY FARMS  
LOBOS

SEVEN  
GENERATIONS  
ARCHITECTURE + ENGINEERING  
600 E. Michigan Ave., Suite B  
Kalamazoo, MI 49007  
P: 269-927-0144  
www.7GenAE.com

WBK  
ENGINEERING  
WBK ENGINEERING, LLC  
110 WEST MAIN STREET,  
SUITE 201  
ST. CHARLES, ILLINOIS 60174  
(630) 443-7755



MANY FARMS  
HIGH SCHOOL  
DESIGN SERVICES  
VOLUME 5:  
CIVIL PROJECTS  
LOOP DRIVE  
MANY FARMS, ARIZONA 86538

MARK	DATE	ISSUED FOR BIDS	DESCRIPTION
	02/02/2024	ISSUED FOR BIDS	
ISSUE: ISSUED FOR BIDS			
BIA PROJ #: 140A1620D0006/140A1622F0164			
DWG: 02/20/22-PROP ROAD.DWG			
DRAWN BY: BD			
CHECKED BY: JC			

SHEET TITLE:  
ROAD GEOMETRIC PLAN

SHEET: C504